

Manatee Players and  
Producing Artistic Director Rick Kerby  
present



# KISS ME, KATE

Music & Lyrics by  
**COLE PORTER**

Book by  
**BELLA & SAMUEL  
SPEWACK**

## KISS ME, KATE

Is presented by arrangement with Concord Theatricals.

All authorized performance materials are also supplied by Concord Theatricals.  
[www.concordtheatricals.com](http://www.concordtheatricals.com)

**Rated PG-KISS ME, KATE contains adult language and themes.**

---

Directed and Choreographed by  
**Rick Kerby**

Musical Direction by  
**Benjamin Eisenhour**

Set Design by  
**Donna Buckalter**

Costumes Designed by  
**Caren Brady**

Lighting Designed by  
**Nick Jones**

Stage Managers  
**Kristin Ribble &  
Neal Addison**

---

April 25-May 12, 2024  
Stone Hall at Manatee Performing Arts Center

# Theater Information

Each audience member must occupy a seat and have a ticket, including infants. Although there are no age restrictions, parents should use discretion regarding appropriateness of some offerings. Information on shows, including recommended ages, is available by calling our Box Office at (941) 748-5875.

## LATECOMERS

Tickets are valid only if presented for admission before the start of the date and time of the show listed. Patrons arriving late are not guaranteed admission, but may be seated on an "as available" basis at the sole discretion of management.

## SMOKING/VAPING

Smoking or use of e-cigarettes is not permitted anywhere inside the performing arts center.

## RECORDING DEVICES ARE NOT ALLOWED

Due to copyright restrictions, audio and video recording is strictly prohibited during performances.

## ELECTRONIC DEVICES

Please turn off all electronic devices.

## EMERGENCY EXITS

Please familiarize yourself with nearest exit sign.

## ACCESSIBILITY

The Manatee Performing Arts Center strives to make its performances and facilities accessible to everyone and adheres to all federal, state, and local laws, regulations, and guidelines with respect to providing reasonable accommodations as required to afford equal opportunity to qualified individuals with disabilities.

## BOOSTER SEATS

Booster seats are available by request for those patrons who need them. Please see a team member at the information desk in the lobby.

## NOISE REDUCTION EAR PROTECTION

We have both adult and child-sized hearing protection for those with sound sensitivity. Stop by the information desk to secure a set to better enjoy the live entertainment.

## BOX OFFICE INFORMATION:

### Hours of Operation

Monday - Friday: 9 AM - 5 PM

Phone: (941) 748-5875

Box office is open 60 minutes before each performance.

Tickets are also available online at [ManateePerformingArtsCenter.com](http://ManateePerformingArtsCenter.com)

## STONE HALL



## BRADENTON KIWANIS THEATER



# Creative Team

## **Rick Kerby**

*(Director/Choreographer)* – Prior to his move to Bradenton, Rick was the Entertainment Director for the USO of Metropolitan New York and the organizer of the Miss USO Contest. His USO troupe was featured on the Today Show, Good Morning America, Fox News, Macy's Thanksgiving Day Parade, and on The Miss America Pageant. The same USO troupe performed as part of the USO Celebrity Tours in the Middle East, Europe, and the Baltic. Other directorial credits include numerous shows at Surflight Theatre in New Jersey, Theatre by the Sea in Rhode Island, The Arundel Playhouse in Maine, Wolford House Dinner Theatre in Virginia, New London Barn Playhouse in New Hampshire, Stage Door Canteen Theatre at the National World War II Museum in New Orleans, Westbank and Duplex Theaters in New York City, and on many cruise ships. He has served on the faculties of Wagner College on Staten Island and the Academy of Music and Dramatic Arts in New York City. Rick is the past President of the Florida Theatre Conference, Past President of the Florida Association of Community Theaters, and the past President of the board for the American Association of Community Theatres. Rick was honored as a recipient of the Fellows Award from AACT. Rick most recently directed MPAC's productions of *Oklahoma*, *Something Rotten*, *Sunset Boulevard*, *Company*, *Gypsy*, *How to Succeed*, *Titanic*, *Chaplin*, *Mamma Mia*, *Pippin*, *I Do, I Do*, *Winter Wonderettes*, *Matilda*, *West Side Story*, *Barnum*, *Mary Poppins*, *Cabaret*, *Newsies*, *Hunchback of Notre Dame*, *A Little Night Music*, *The Producers*, *Boytton Beach Club*, *Assassins*, *42<sup>nd</sup> Street*, *Chess*, *The Little Mermaid*, *Secret Garden*, and *Into the Woods*.

## **Benjamin Eisenhour**

*(Musical Director)* – Ben is pleased to be working on his second show with the Manatee Performing Arts Center. He is a native of the Maryland/Pennsylvania area and recently moved to Florida to start a career as a teacher. He instructs middle and high school math at Manatee Learning Academy here in Bradenton and could not love it any more. He is a graduate of Mansfield University of Pennsylvania, where he earned a bachelor's of music with an emphasis on vocal performance, a minor in English literature, first place in the upper-division musical theatre category at the National Association for Teachers of Singing competition, and two gold-medal performances at the world choir games in Cincinnati, OH, and Riga, Latvia. He is also a graduate of Ohio University, where he earned a master's in choral conducting. He has led several vocal ensembles including the Ohio University Singers, the Singing Men of Ohio, and the "Benchwarmer Jazz" ensemble at Mansfield University. Ben also belongs to two fraternities that mean the world to him: Phi Mu Alpha Fraternity of America (Beta Omicron Chapter) and Phi Sigma Kappa (Phi Nu Chapter). He has a long list of credits in professional and community theatre including *Oklahoma!* (Jud), Manatee Performing Arts Center; *42nd Street* (Mac/Thug), Fulton Theatre in Lancaster, PA; *Amazing Grace* (Einhorn/Whitley, Major Gray U/S), Last National Touring Company; *Hair* (Margaret Mead), Artcentric Theatre in Baltimore, MD; *Kiss Me, Kate* (Paul/Chorus Captain), People's Bank Theatre in Marietta, OH; *Rocky Horror Picture Show* (Riff Raff), Iron Crow Theatre in Baltimore, MD; and many other performances. He has worked on many concert series with some prolific names including John Lithgow, Patty Lupone, and the Cantus Vocal Ensemble. "I am so honored to have the experiences I've had and work with the incredible people here at MPAC."

# Creative Team

## **Donna Buckalter**

(Set Designer) – Donna has been working as a scenic designer on the Sun Coast since moving here from NY in Dec. 2003. She also designs for Venice Theatre, The Westcoast Black Theatre, and Sarasota Opera. She and her husband Mark always work as a team. Mark contributes moral support, brilliant and creative ideas, his talent in scenic artistry, and his gift for problem-solving. Donna's first design at Manatee Players was *Moon Over Buffalo* in November 2004, and she has designed here every season since. Some of her favorites include *Something Rotten*, *Mamma Mia*, *Pippin*, *Matilda*, *Newsies*, *Bridges of Madison County*, *Into the Woods*, *The Full Monty*, *Cats*, *Into the Woods*, *Shrek*, *Big River*, *Hank Williams: Lost Highway*, *Willy Wonka*, *Hairspray*, *Pump Boys and Dinettes*, *A Funny Thing Happened on the Way to the Forum*, *Peter Pan*, and *You're A Good Man, Charlie Brown*. "Thanks to Ralph, without whose talented contribution and tireless work this would no longer be possible. I love you, Juliana."

## **Nick Jones**

(Lighting Designer) – Nick is excited to be returning to Manatee Performing Arts Center once again after recently designing *Nonsense*, *Winter Wonderettes*, *You're A Good Man Charlie Brown*, *Doubt*, and *Goat Song Revel*. Having designed in Sarasota and New York, credits span numerous companies and projects such as Asolo Rep, Dog Days Theatre Company, and Westcoast Black Theatre Troupe. Additionally, he serves as a Lighting Assistant on the New Year's Eve Times Square Celebration. For a full list of works, visit his website at [standbylx.net](http://standbylx.net).

## **Caren Brady**

(Costume Designer) – Caren Brady is celebrating 36 years as a Fairy Godmother for all things costume. A graduate of Bluffton College, Caren started her career at Stagecraft Theatrical in Cincinnati Ohio and eventually opened her dream business, Cincinnati Costume Company. This shop costumed productions throughout Ohio and the nation. After losing Cincinnati Costume Company in a fire in 2007, Caren joined Cincinnati Landmark Productions as their Costume Shop Manager, Costume Designer, and Props Mistress and served there for over 12 years. Now Caren is beginning a new chapter, here at Manatee Performing Arts Center. She is thrilled to be working with this cast and production team. Much love to family and friends far and near who always support the crazy costume lady!

## **Neal Addison**

(Stage Manager) – Neal is excited to be working on *Kiss Me Kate* with this hard-working and talented group of people! Most recently, Neal stage managed our production of *Parade* and was seen onstage as Ali Hakim in *Oklahoma!* He also directed the MPAC Kiwanis Studio Theatre production of *Songs for A New World*. Neal was also seen both onstage and backstage as ASM for our productions of *Sunset Boulevard*, *Company*, *How to Succeed*, *Titanic*, and *Chaplin*. He previously co-directed MPAC's production of *You're A Good Man, Charlie Brown*. Stage Management credits include *Next to Normal*, *Rent*, *The Will Rogers Follies*, *Cinderella*, *Damn Yankees*, *Buddy – The Buddy Holly Story*, *Ain't Misbehavin'*, *Pirates of Penzance*, *Calendar Girls*, *Nice Work If You Can Get It*, *Nine*, *Anna in the Tropics*, *The Full Monty*, *Wit*, and *It's A Wonderful Life*. Neal has also served as Co-Stage Manager for *Something Rotten*, *Sunset Boulevard*, *Company*, *How to Succeed*, *Titanic*, *Pippin*, *I Do, I Do*, *Nonsense*, *Winter Wonderettes*, *You're a Good Man Charlie Brown*, *West Side Story*, *Mary Poppins*, and *Barnum* and as ASM on *Newsies*, *The Producers*, *Sylvia*, and *Children of a Lesser God*. "Thanks to Rick, Ben, Kristin, and the entire cast and production team for all your hard work!"

# Creative Team

## Kristin Ribble

(Production Stage Manager) – Kristin has been a part of the Manatee Players since she was twelve years old in a variety of capacities and has been the Production Manager for nearly sixteen years. Kristin’s most recent stage management credits include *Oklahoma*, *Gypsy*, *Titanic*, *Chaplin*, *Mamma Mia*, *Matilda*, *Mary Poppins*, *Cabaret*, *Newsies*, *The Hunchback of Notre Dame*, *A Little Night Music*, and *The Producers*. Other favorite stage management credits include *Assassins*, *42<sup>nd</sup> Street*, *Chess*, *The Little Mermaid*, *Secret Garden*, *Into the Woods*, *Tarzan*, *Les Miserables*, *Miss Saigon*, *My One and Only*, *Shrek*, *Whorehouse*, *Anything Goes*, *Evita*, *The Boynton Beach Club*, and the award-winning productions of *Sweeney Todd* and *Sunday in the Park with George*. She also was co-stage manager for *Something Rotten*, *Sunset Boulevard*, *Company*, *How to Succeed*, *Pippin*, *I Do, I Do*, *Nunsense*, *Winter Wonderettes*, *You’re A Good Man Charlie Brown*, *West Side Story*, and *Barnum*. Kristin recently co-directed/choreographed MPAC’s productions of *The Will Rogers Follies* and *You’re A Good Man, Charlie Brown*. She has enjoyed being a part of the crew working sound for several productions. Kristin graduated with Honors from the University of Florida with a degree in psychology and a minor in sociology. She worked for several years with at-risk youth in Manatee County. “Thank you to the many crew members who make the magic happen!”

## Cast

Lilli Vanessi/Kate .....	Michelle Anaya
Fred Graham/Petruchio .....	Cory Woomert
Lois Lane/Bianca .....	Kathryn Parks
Bill Calhoun/Lucentio .....	Todd Colbert
Man 1.....	Mike Nolan
Man 2.....	Mark Eichorn
Hortensio/Riley.....	Christos Nicholoudis
Gremio/Flint.....	Tony Nordyke
Paul .....	Joe Eckstein
Hattie .....	Caitlein Jayne Jammo
Henry/Baptista .....	Craig Engle
General Harrison Howell.....	Dan Yonko
Pops .....	Peter O’Malley
Ralph.....	Brendan Kroposky
Cab Driver .....	Tony Nordyke
Driver.....	Noah Henry
Trio Men .....	Brendan Kroposky, Christos Nicholoudis, Peter O’Malley
Ensemble .....	Sharon Bartley, Carol Ciancia, Joe Eckstein, Noah Henry, Caitlein Jammo, Brittney Klepper, Brendan Kroposky, Meg Newsome, Peter O’Malley, Olivia Pierce, Linda Roeming, Sara Sweetnich, Ella Thompson, Addison Yonko, Dan Yonko

# Show

## Act One

Another Op'nin', Another Show .....	Hattie, Company
Why Can't You Behave? .....	Lois, Bill
Wunderbar .....	Fred, Lilli
So In Love .....	Lilli
We Open In Venice .....	Kate, Petruchio, Bianca, Lucentio
Tom, Dick, or Harry.....	Bianca, Gremio, Hortensio, Lucentio
I've Come To Wive It Wealthily in Padua .....	Petruchio, Men
I Hate Men .....	Kate
Were Thine That Special Face .....	Petruchio
Cantiamo D'Amore .....	Trio Men, Ensemble
Finale Act One .....	Kate, Company

## 15-Minute Intermission

## Act Two

Too Darn Hot.....	Paul, Company
Where Is The Life That Late I Led .....	Petruchio
Always True to You in My Fashion .....	Lois
Encore: Always True to You in My Fashion.....	Lois
Bianca .....	Bill, Ensemble
Reprise: So In Love .....	Fred
Brush Up Your Shakespeare.....	Man One, Man Two
First Encore: Shakespeare .....	Man One, Man Two
Second Encore: Shakespeare .....	Man One, Man Two
Pavane .....	Company
I Am Ashamed That People Are So Simple .....	Kate, Petruchio, Company
Finale Act Two.....	Kate, Petruchio, Company

**Registration is now  
open for our Summer  
Education Camp!**

**Go to [ManateePerformingArtsCenter.com](http://ManateePerformingArtsCenter.com)  
or call (941) 748-5875 to sign up**

# Cast



## **Michelle Anaya**

(*Lilli Vanessi/Kate*) – Michelle is grateful to be part of this talented cast, crew, and team. Favorite past roles include *Grey Gardens* (Edie), *Assassins* (Sarah), *Carousel* (Julie), and *Spamalot* (Lady of the Lake). Michelle thanks her family, friends, and teachers (Joe & Violette Meyers and Jane Mills) for their support.



## **Sharon Bartley**

(*Ensemble*) – Last seen on MPAC's stage in *She Loves Me*. She is so lucky to be onstage in *Kiss Me, Kate* with yet another talented, fun-loving cast. Sharon is happy to be part of another classic American musical!



## **Carol Ciancia**

(*Ensemble*) – Carol is happy to be back at MPAC for her 5th show. A snowbird from New Jersey, she has performed over 20 roles in the Gilbert & Sullivan repertory and numerous roles with community theaters in NJ. Married to cast member, Peter O'Malley.



## **Todd Colbert**

(*Bill Calhoun/Lucentio*) – Todd recently made his MPAC debut as Robert Martin in *The Drowsy Chaperone*. He began performing at Ocala Civic Theatre in 1994. His credits include *My Favorite Year* (Benji Stone), *Cats* (Skimbleshanks), *Sweeney Todd* (Toby), and *The Scarlet Pimpernel* (Armand). Todd lives in St. Pete and loves traveling and running.



## **Joe Eckstein**

(*Paul/Ensemble*) – Joe is a children's book author and illustrator and owns and operates an art and media production company, Imagine! Studios. He grew up in central Ohio and has been performing onstage since age five. Joe has performed regularly with Manatee Players since *Bye Bye Birdie* (Harry MacAfee) in 2016.



## **Mark Eichorn**

(*Man Two*) – You may have seen Mark as the Queen in *Something Rotten!* (Robin). Other favorite roles include *Beauty and the Beast* (Cogsworth) and *Cinderella* (Sebastian). Mark is happy to be finishing his 8th season with MPAC. Mark is from Allentown PA, a retired banker, and lives with his puppy, Zoey.



## **Craig Engle**

(*Henry/Baptista*) – Last seen as Starnes in *Parade*, Craig is thrilled to be a part of this talented cast. Some past shows for MPAC include *Gypsy* (Pop/Cigar), *Beauty and the Beast* (Maurice), *Something Rotten!* (Shylock), *Elf* (Greenway), *Buddy Holly* (Norman), *Full Monty* (Reg), and *Drood* (Throttle). Love to Linda.

# Cast



## Noah Henry

(*Driver/Ensemble*) – Noah is thrilled to be a part of this amazing show and cast! Some of his previous shows: *Oklahoma!* (Joe/Will US), *Drowsy Chaperone* (Superintendent/Ensemble), *Pollyanna* (Dr. Chilton/Rev. Whittier), *Sure Thing* (Bill), and *Mere Mortals* (Frank). “Thanks to my family for always supporting me.”



## Caitlein Jayne Jammo

(*Hattie/Ensemble*) – Caitlein is [synonym for excited] to be back at MPAC (*Parade*, *Oklahoma!*, and *Rocky Horror*). Her favorite nearby credits include *Assassins* (Housewife) at MAD Theatre; *Gypsy* (Louise) at Carrollwood Cultural Center; *The Addams Family* (Morticia) at SPCT. She thanks her theatre family for their love and support! Pinky!



## Brittney Klepper

(*Ensemble*) – Brittney is delighted to be back on stage after stage managing a few productions. Previous shows at MPAC include *Drowsy Chaperone*, *Something Rotten!*, *Company*, *Gypsy*, *How to Succeed*, *White Christmas*, *Hairspray*, *Shout*, *Ring of Fire*, *Little Mermaid*, *Sylvia*, *My One and Only*, *Les Misérables*, *Shrek*, *Evita* and *Anything Goes*.



## Brendan Kroposky

(*Ralph/Ensemble*) – Brendan is excited to be in his fourth production at MPAC. He was most recently in *Oklahoma!* (Fred/ Jud US). Previous roles: Man 1 in *Songs For a New World* and Tom Snout in *Something Rotten!* Brendan would like to thank his friends and family for supporting his theatric endeavors.



## Meg Newsome

(*Wardrobe/Ensemble*) – Recently, Meg was honored to be inducted into our new Hall of Fame. Some favorite roles here at MPAC have been *Music Man* (Mrs. Paroo), *Ragtime* (Mother), *Fiddler on the Roof* (Yente), *Forum* (Domina), and *Sunday in the Park* (Mother). Meg is thrilled to work with this knockout cast!



## Christos Nicholoudis

(*Hortensio/Riley*) – Christos is a local attorney and recently began his own practice. This is his fourth performance here at MPAC. His past roles were in *Next to Normal* as Gabe, *Cinderella* as Prince Topher, and Jim Farrell in *Titanic*. Christos would like to dedicate this production to Kristin Ribble who rewrites all his bios so lovingly.



## Mike Nolan

(*Man One*) – In the last three seasons, local celebrity Mike Nolan has been seen in *Mamma Mia!* (Bill), *Chaplin* (Sennett), *Titanic* (Murdoch), *How to Succeed...* (Biggley), *The Music Man* (Marcellus), *Company* (Harry), *Something Rotten!* (Jeremiah), *The Rocky Horror Show* (Eddie), and *Parade* (Dorsey). Mike will be forwarding his mail to the theater.

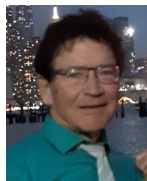


# Cast



## **Tony Nordyke**

*(Gremio/Flint)* – Tony is very excited to make his debut performance in MPAC's *Kiss Me, Kate*. He works as a veterinary medical attendant, and in his free time, paints and illustrates. Tony designed some of the images used in the video screen throughout the productions of both *Kiss Me, Kate*, and *Oklahoma!*



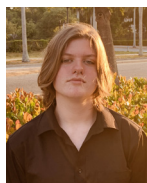
## **Peter O'Malley**

*(Pops/Ensemble)* – Fifth show at MPAC: (priors include *Titanic*; *Music Man* (Olin, Quartet)). Roles elsewhere include *The Fantasticks* (El Gallo); *South Pacific* (Emile); *Sweeney Todd* (Judge Turpin); *Guys & Dolls* (Sky); *Chicago* (Billy); *Forum* (Miles Gloriosus); 27 Gilbert & Sullivan roles; children's theater; concerts; revues; recitals. Married to cast member Carol Ciancia.



## **Kathryn Parks**

*(Lois Lane/Bianca)* – A Sarasota-native who got her start in 20+ shows at the Golden Apple Dinner Theatre, favorite MPAC roles include *Damn Yankees* (Lola), *My One and Only* (Edythe), and *Sound of Music* (Maria). She's appeared at FST, American Stage, St. Pete Opera, Urbanite, Asolo, WBTT, and is an award-winning filmmaker. [KathrynParks.com](http://KathrynParks.com)



## **Olivia Pierce**

*(Ensemble)* – Olivia Pierce is in the dance ensemble for *Kiss Me, Kate*, and she is thrilled to be part of such a wonderful cast in such an amazing show. While she has never volunteered at MPAC up until now, her previous credits include *White Christmas* (tap ensemble) and *Annie Jr.* (Pepper).



## **Linda Roeming**

*(Ensemble)* – Linda is delighted to be sharing the stage with this talented cast, as well as to be working alongside of this fabulous artistic team and crew. Linda has been seen locally in musicals, plays, commercials, and tap dance performances. Additionally she is an avid gardener and visual artist.



## **Sara Sweetnich**

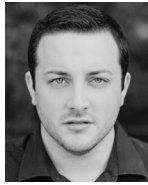
*(Ensemble)* – Sara is thrilled to be back at MPAC in *Kiss Me, Kate* after being seen in *Oklahoma!* (Ensemble) in the beginning of the year. "I want to thank my family, friends, and boyfriend for their unwavering support!"



## **Ella Thompson**

*(Ensemble)* – Ella is excited to be back at MPAC! She was most recently seen in Roger and Hammerstein's *Oklahoma!* (Ensemble), but she looks forward to meeting new people and creating new memories next season! "I would like to thank my mom and dad for all they do to support me."

# Cast



## **Cory Woomert**

(*Fred Graham/Petruchio*) – Cory has been in many local productions and is thrilled to be back at MPAC tackling one of his “bucket list” roles. Favorites include: *Company* (Bobby), *Shrek* (Shrek), *Starcatcher* (Black Stache), *Hunchback* (Frollo), *Titanic* (Mr. Andrews), *Assassins* (Czolgosz), *Little Shop* (Orin), and *Bridges* (Bud). “Thank you to Darah, Judah, and Asher!”



## **Addison Yonko**

(*Ensemble*) – Addison is so excited to be returning to the MPAC stage once again! Favorite roles include *Matilda* (Mrs. Wormwood) and *Oklahoma!* (Ensemble). “I am so excited to be doing a show with my Dad and sharing this experience with him. Thank you to my Mom and Dad for supporting me!”



## **Dan Yonko**

(*General Harrison Howell*) – Dan is grateful for the opportunity to be part of this delightful musical with his super-talented daughter, Addison. Favorite shows at MPAC include *Chaplin* (Sydney), *Sound of Music* (Max), and *She Loves Me* (Sipos). “Much love to my phenomenally amazing wife, Sarah, for her love, grace, and unwavering support.”

**Denotes Manatee Players Debut**



**A World Premiere Event**

## **Murder By the Book**

None of Agatha Christie's fictional works could compare, or were as fascinating as a real event in the author's life, which astonished the world and which is the inspiration for the new mystery play by B. J. Mohr, *Murder by the Book*.

This production is sure to astound and delight you!

**June 13-23**

**Presented by the Royal James Theater**

# Kiss Me, Kate Team

Director & Choreographer .....	Rick Kerby
Musical Director .....	Benjamin Eisenhour
Set Designer.....	Donna Buckalter
Costume Designer .....	Caren Brady
Lighting Designer .....	Nick Jones
Production Manager .....	Kristin Ribble
Assistant Technical Director.....	Larry Crouse
Master Electrician .....	Thomas Anderson, Tom Sparks
Stage Manager/Light Board .....	Kristin Ribble
Stage Manager/Sound Board .....	Neal Addison
Assistant Stage Manager .....	Eduardo Zoppe
Running Crew .....	Ciel Foster, Janet Poelsma
Follow Spots .....	Marilyn Andreini, Nancy Maust, Diane Rabbu
Swing Crew .....	Janet Glendening, Randy Rentfro, Sarah Yonko
Dresser .....	Janet Poelsma
Scenic Artists .....	Donna Buckalter, Mark Buckalter, Ralph Nurmela
Projection Artists.....	Donna Buckalter, Tony Nordyke, Dan Yonko
Sound Cue Design .....	Cory Boyas, Kristin Ribble
Props.....	Rick Kerby, Dan Yonko
Set Construction .....	Thomas Anderson, Phil Croome, Larry Crouse, Mike Harris, Steve Leggett, Ralph Nurmella, Jim Uberti, Steve Weitekamp
Set Painting .....	Alexa Barber, Donna Buckalter, Mark Buckalter, Larry Crouse, Mike Harris, Ralph Nurmela, Steve Leggett, Jim Uberti, Steve Weitekamp
Costume Construction .....	Mackenzie Bishop, Caren Brady, Barbara Duncan, Tina Fisher, Gail Hargaden, Ansley McDonald, Zoe Morrison, Christine Olson, Kelly Rauch, Mary Ann Rowe, Vincenzo Russo, Albert Sultana, Theresa Sultana, Cheryl Voltolina, Wayne Waletich
Wigs.....	Caren Brady, Cory Woomert, Sarah Yonko
Production Photographer .....	Diane Broda
Special Thanks .....	Dan Yonko

# Manatee Performing Arts Center

## Administration

Chief Cheerleader/CEO .....	Janene Amick CAP, CFRE
Producing Artistic Director.....	Rick Kerby
Comptroller.....	Jeff Evans
Director of Communications.....	Dan Yonko
Program Manager .....	Jillian Price
Fundraising Associate.....	Isabella Onken
Outreach Associate.....	Melissa J. Wilson
House Manager.....	John Illar
Assistant to the Chief Cheerleader (volunteer).....	Mary Smith
Development Associate (volunteer).....	Cheryl Unruh
Box Office Volunteers.....	Randall Rentfro (Thursday) Gail Rhode (Wednesday) Noreen Roberts (Tuesday) Mary Sultana (Friday)
Special Event Associate (volunteer).....	Pam Smith
DraMature Secretary (volunteer) .....	Jay A. Poppe
Webmaster (volunteer) .....	Randy Ford

## Production

Production Manager .....	Kristin Ribble
Resident Costume Designer.....	Caren Brady
Assistant Technical Director.....	Larry Crouse
Associate .....	Thomas Anderson
Master Electrician .....	Tom Sparks
Tool Timers (volunteers).....	Phil Croome, Mike Harris, Steve Leggett, Ralph Nurmela, Jim Uberti
Leading Ladies .....	Costume Shop Volunteers Shannon Donnelly, Barbara Duncan, Tina Fisher, Gail Hargarden, Christine Olson, Regina Piety, Ruth Robinson, Mary Ann Rowe, Vincenzo Russo, Albert Sultana, Theresa Sultana, Cheryl Voltolina, Wayne Waletich
Wig Master (volunteer).....	Fred Werling
Lobby Pianist (volunteer) .....	Don Donahue
Production Photographer (volunteer).....	Diane Broda

# A UNIQUE VENUE FOR MANY OCCASIONS

At the Manatee Performing Arts Center we know how to put on an extraordinary show. Our \$25 million multi-purpose campus offers a spectacular atmosphere for hosting your next event. The center boasts a wide selection of venues suitable for a variety of unique events and memorable moments. From grand receptions and large-scale productions to intimate gatherings and corporate meetings we can cater to your every detail.

Supported by our professional staff, the center's various amenities are available to rent for meetings, trade shows, conferences, fundraisers, rehearsals, weddings, bar mitzvahs, lectures, screenings, seminars, graduations, luncheons etc...

## **Campus Venues:**

**Stone Hall** (Main Stage, 350)

**Bradenton Kiwanis Theater** (Studio Theater, 80-100)

**Gallery** (Lobby, 400)

**Kiwanis Hall** (2nd Floor Ballroom, 340)

**SkyBox** (Private Main Stage Viewing Lounge, 13)

**Dedicated Parking** (350+ spaces)

With the optimal enjoyment of your guests in mind, our campus provides full service box office, excellent sight lines, complete lighting and sound systems along with convenient parking options.

For more information about renting our venues, please call (941) 749-1111 x125, email [Rentals@ManateePerformingArtsCenter.com](mailto:Rentals@ManateePerformingArtsCenter.com), or submit an Event Inquiry online.



# VOLUNTEERING

Volunteers are the heart of the Manatee Performing Arts Center. They supplement our work force and bring creative energy to the theatre. For more than 74 years, they have sewn costumes, sold tickets, operated lights and read lines. They have auditioned, performed, painted, and made us who we are.

Actors, will-call, receptionists, hosts, ushers, technicians, costumers, carpenters, painters and stage crew members all play critical roles in raising the curtain on each performance.

The quality of our productions is the direct result of our volunteer talent guided by on-staff theatre professionals.

Volunteers also provide a link with the community that can open and extend Manatee Performing Arts Center to new audiences and play an important role in public education.



Volunteers are placed according to their interest, experience and availability (flexible schedules and our accessible facility permit everyone and anyone the ability to volunteer).

For more information about volunteering, please contact us at (941) 749-1111 or submit a volunteer interest form on our website.

There's a wealth of opportunities at Manatee Performing Arts Center.

We need you!

# LEAVE A LEGACY

The Florida Cultural Group, Inc. and its Manatee Performing Arts Center campus is fortunate to have loyal and generous audience members, volunteers, and staff that have grown with us over the past 70+ years. As we continue to grow into a cultural center that better serves our community in the future, we need to have consistent and reliable funding sources.

We see a simple solution to our future funding needs. With a much larger endowment fund, we can assure the future of the Florida Cultural Group, Inc.'s vital programs. You have treated us like a member of the family coming back every year and supporting us beyond the price of your tickets.

We would like for you to consider including the Florida Cultural Group, Inc. in your future financial plans through many options that provide tax and recognition benefits to you today.

Here are a few of the ways you can easily provide for and ensure the Florida Cultural Group, Inc.'s future through a Legacy Gift:

- Bequest in your will or living trust
- Life income gift (charitable gift annuity, pooled income fund, charitable remainder trust, or charitable lead trust)
- Retirement plan beneficiary designation
- Life insurance policy beneficiary designation
- Contact Janene Amick at (941) 749-1111 to schedule an appointment.

